

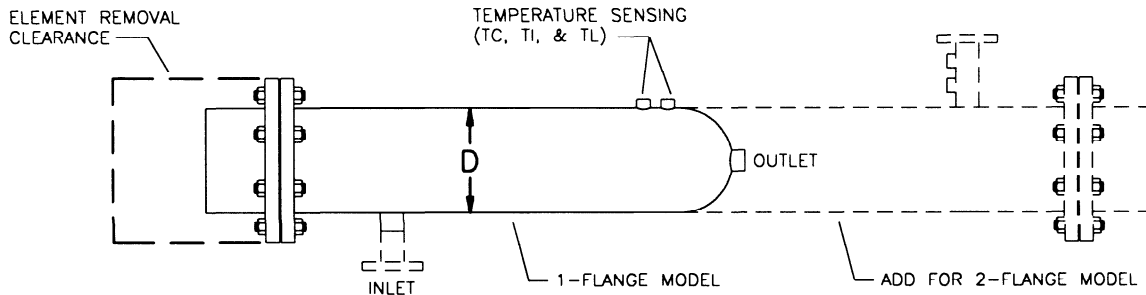


MODEL I_H

ELECTRIC CIRCULATION HEATERS

The PRECISION Model I_H Electric Instantaneous Circulation Heaters are custom designed units to provide high efficiency and quick response heating of liquids and gasses.

All models, whether they are for air (IAH), oil (IOH), steam (ISH), or water (IWH), utilize industrial quality stainless steel, Incoloy, or copper sheathed heating elements mounted in an ASME Code pressure vessel. The elements are mounted in flanges via compression fittings and thus are replaceable with standard tools. Element watt density and sheath material, as well as the pressure vessel construction and configuration, are selected to best suit the requirements of each application. Also customized is the control scheme selected, whether it shall be on-off or stepped control, or if it should be a premium 0-100% SCR Power Control with PID-controlled input.



The following table lists the basic model numbers and ratings. Larger ratings are available by using multiple units in combination, connected either in parallel, series, or parallel and series, depending on flow and temperature conditions. The smaller single-chamber units are standardly shipped uninsulated to be wall-hung or pipeline mounted, but can be optionally insulated and sheet metal enclosed for floor mounting. The NEMA 4 control cabinet is usually shipped separate for wall or pedestal mounting. The larger multiple-chambered units are normally shipped insulated and sheet metal enclosed, with an integral control cabinet.

Heater Configuration:

Model Number+	Vessel Diameter	# of Flanges	Max # of Elements++
6_1	6	1	6
6_2	6	2	12
8_1	8	1	12
8_2	8	2	24
0_1	10	1	18
0_2	10	2	36
2_1	12	1	24
2_2	12	2	48
4_1	14	1	36
4_2	14	2	72

Element Ratings:

Element Number+	KW @ 480V (IWH)			KW @ Reduced Voltages (IAH/ IOH/ ISH)					Element Length
	50wsi	67wsi	75wsi	12wsi*	17wsi*	19wsi*	22wsi**	25wsi**	
1	5.0			1.25					20"
2	10.0			2.5					36"
3			4.0			1.0		1.33	12"
4			5.0			1.25		1.67	14"
5			6.0			1.5		2.0	16"
6		6.7			1.67		2.23	2.0	20"
7			10.0			2.5		3.33	25"
8		12.0			3.0		4.0	3.33	33"
9			13.3			3.33		4.43	33"
0	Special Element								

NOTE: Overall length is equal to the element length (2x element length for 2-flange models) plus 10"

+ Complete model number requires heater type prefix element number insertion, and heater rating and design pressure suffixes

Example: Model ISH-862-0035-250ST represents a steam superheater configured with an 8" tank, (21) 1.67KW elements operating at 17wsi, (2) element flanges, a total rating of 35KW, and designed for 250psi max steam pressure

++Max number of elements can be reduced in increments of 3

* Series connection

** Wye connection

5727 Superior Drive • Morristown, TN 37814
Phone (423)587-9390 • Fax (423) 581-7749

04/97